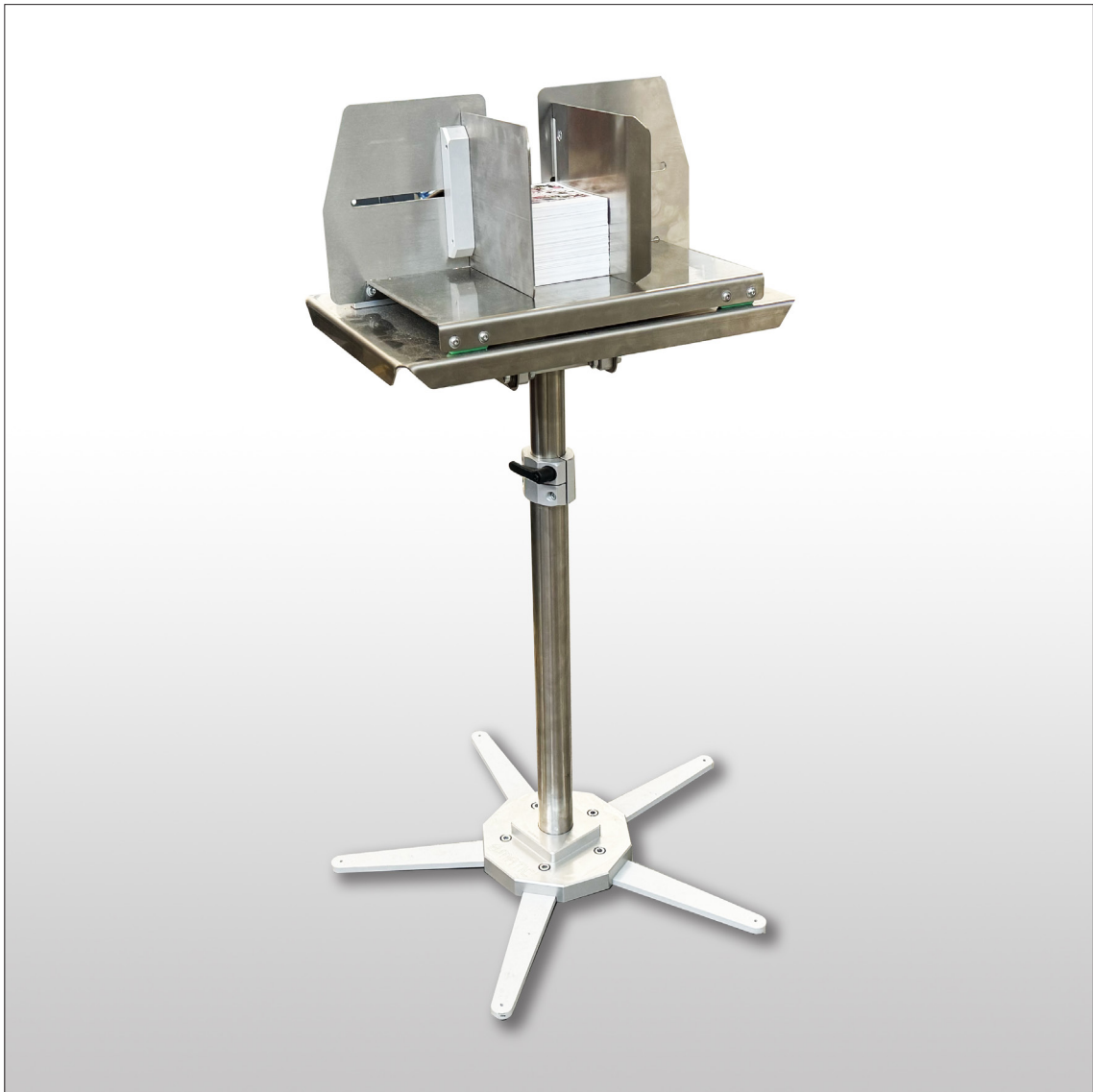


OUTLET COLLECTION TRAY
For friction feeder F350



Applicable for F350 Friction Feeder and Conveyor Belt

Outlet collection tray for F350 with pedestal

The collection tray for F350 is a useful accessory for stacking products in a simple and orderly way.

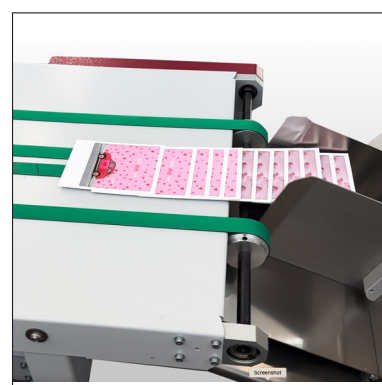
1. It has adjustable aligning guides with knobs for perfect alignment of the products.
2. The surfaces in contact with the products are made of stainless steel without residues on the products.
3. The height-adjustable pedestal with 5 spokes guarantees excellent stability.
4. The entire structure is made of steel with a tilting platform.
5. A slot in the structure allows the insertion of fingers for easy extraction of the stacked products.
6. The F350 Stacker Tray can be fit in two ways:
 - directly at the exit of the F350 friction feeder
 - after the conveyor belt where the products come at reduced speed and already slightly overlapped.



Slot for products extraction



Application on Feeder F350



Application on conveyor belt

Technical data

Compatible size mm	Min 80 X 55 Max 320 X 220
Tilting top	Max: 45°
Table height	from 660mm a 980mm
Net weight	14KG.
Gross weight	22KG.
Dimensions mm (lowest position)	800 X 600 X 600
Purchase code	CG-00785-R01



Dealer area

B.MATIC

Via dei Tigli 10 - 40011 - Anzola Emilia - Bologna - ITALY

Tel: +39/051-739700

WEB: www.bmatic.it MAIL: sales@bmatic.it youtube: B.MATIC SHEETS COUNTING MACHINES